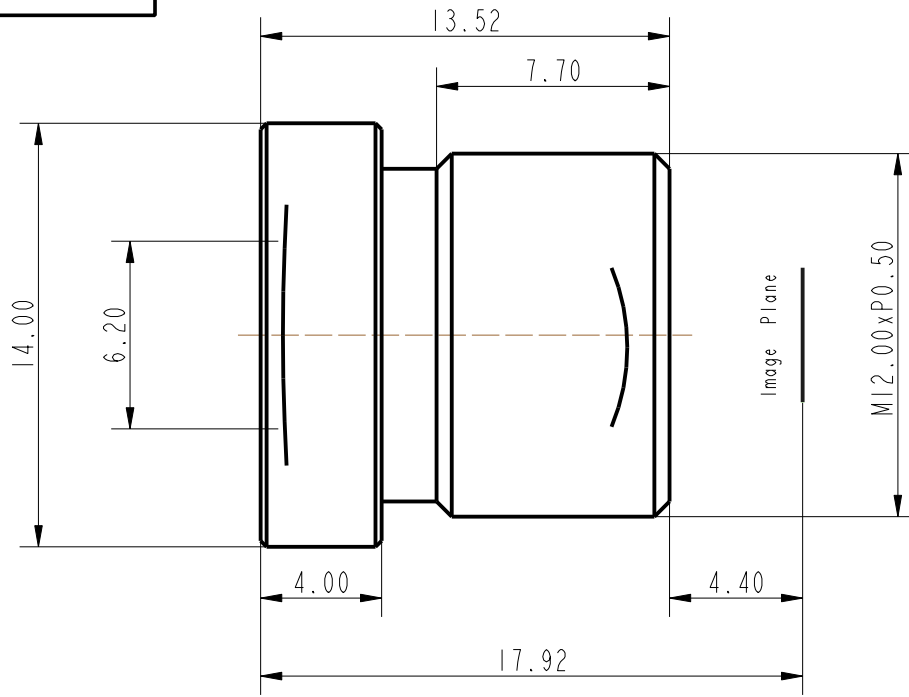



HR0104A-SPEC



Lens Specification

NO			PARAMETER
1	Model Name		HR0104A
2	Sensor		1/4" (4.5mm×3.6mm×2.7mm)
3	Pixel Size		3μm
4	Image Circle(Max.)		4.458mm
5	EFFL(EFFICTIVE Focal Length)		2.57±0.1mm
6	F-Number		2±5%
7	TTL(Total Length)		17.18mm
8	FBI(Flange Back Length)		4.40mm
9	BFL(Back Focal Length)		5.10mm
10	View Angle	Diagonal	110 (2Y'=4.46mm)
		Horizontal	84.2 (2Y'=3.6mm)
		Vertical	60.7° (2Y'=2.7mm)
11	MTF	Center	55.0%@100lp/mm
		0.7Field	T44.2%, S39.6%@100lp/mm
		0.9Field	T30.4%, S42.1%@100lp/mm
12	Distrtion	Optical	≤-38.89%
		TV(Trad)	≤16.84%
13	Relative illumination	0.1Field	83%
14	Chief Ray Angle(Max.)		14.8°
15	Lateral Color(Max.)		≤4.41um
16	IR Filter Thickness		0.7mm
17	Object Distance		29cm-Inf
18	Therad		M12.00xp0.5
19	Operation Temperature		-20°C~+80
20	Storage Temperature		-20°C~+80

 江西高瑞光电股份有限公司

比例 4:1  页码 1/1

重量 (g) 材料

标记	处数	区域	更改内容	担当	时间
承认	审核	工艺	设计	时间	

名称 HR0104规格书 REV.

编号 HR0104A-SPEC A0