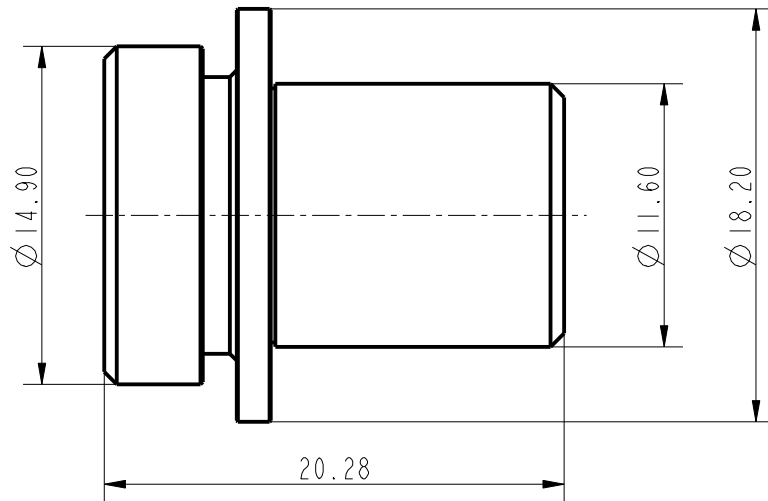


47616-SPEC



Lens Specification

NO	SPECIFICATIONS		PARAMETER
1	Model Name		47616-3MAS
2	Sensor		1/1.67" 3Mega
3	Pixel Size		3.00 μ m
4	Image Circle(Max.)		8.236mm
5	EFFL(Effective Focal Length)		4.70 \pm 0.1
6	F-Number		1.6 \pm 5%
7	TTL(Total Length)		23.5mm
8	FBL(Flange Back Length)		0.72mm
9	BFL(Back Focal Length)		1.105mm
10	View Angle	Diagonal	115.9 $^{\circ}$ \pm 1.5 $^{\circ}$
		Horizontal	105 $^{\circ}$ \pm 1.0 $^{\circ}$
		Vertical	36.7 $^{\circ}$ \pm 1.0 $^{\circ}$
11	MTF 100lp/mm(T/S)	Center	66.4%
		0.3Field	T@60.8%, S@67.7%
		0.55Field	T@48.3%, S@69.8%
		1.0Field	T@31.2%, S@62.3%
12	Distortion	Optical	-45.1%
		TV(Trad.)	-20.3%
13	Relative Illumination	1.0Field	59.1%
14	Chief Ray Angle(Max.)		<16.5 $^{\circ}$
15	Lateral Color(Max.)		<1.6
16	IR Filter Thickness		0.7T
17	Object Distance		0.3m-Inf
18	Therad		/
19	Operating Temperature		-40 $^{\circ}$ C~+110 $^{\circ}$ C
20	Storage Temperature		-40 $^{\circ}$ C~+110 $^{\circ}$ C



江西高端光电股份有限公司

比例 3:1 页码 1/1

重量 (g) 材料

标记	处数	区域	更改内容	担当	时间	名称	47616规格书	REV.
承认	审核	工艺	设计	时间		编号	47616-SPEC	A0